

2

PRODUCT RANGE

2. 1 ECOPANEL - Product description

The thermo-insulated panels are manufactured by two metal sheets bonded together with an insulation core. They then create a compound product, which is at the same time light and resistant; succeeding in combining the maximum advantages of the materials it is made of: durability, insulation and aesthetics.

The compound product's name 'panel' first came about in the European building market during the 60's and has prevailed in today's market.

The automation of its production procedure has made the product financially affordable in comparison to other building lining solutions. It has also helped it dominate in the European construction map.

The main advantages of material are:

- 100% thermally reliable
- Monolithic material with the guarantee of industrial production
- Long term weather, thermal and structural performance durability
- Rigid and lightweight construction solution
- Air-tight & water-tight joints
- Eliminate cold bridges, interstitial cavity condensation within construction
- Non deleterious
- Low air leakage
- Range of aesthetic options from profiled to flat appearances combined with concealed fixings

ECOPANEL products manufactured in our company's factory combine the above advantages along with an economic solution for building facilities.

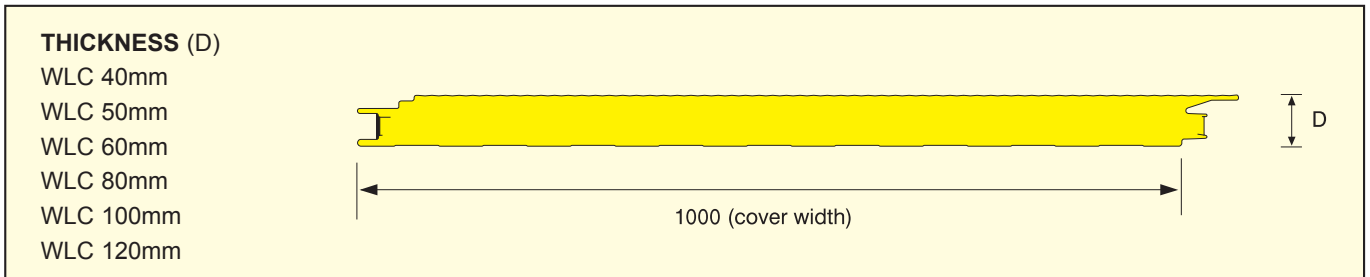
Our production procedure fully harmonises with the worldwide insulation foam product market demands.

The maturing of the thermal insulated panel foam does not require blowing agent harmful to the environment such as chlorofluorocarbons (CFC) and hydrochlorofluorocarbons (HCFC) which destroy the ozone layer and which, according to the Protocol of Montreal, should be largely withdrawn by the year 2010

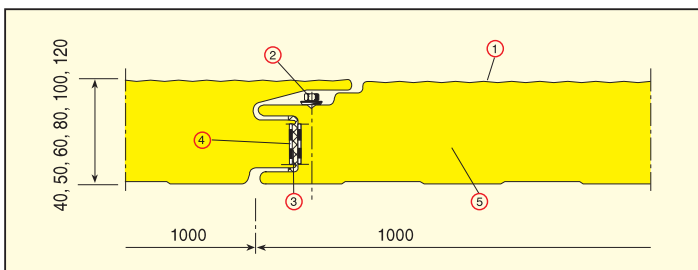




ECOPANEL WLC (wall panel - concealed fix)



SPECIAL FEATURES



- ① Modern external aesthetic option.
- ② Secured concealed fix joint by a normal fastener, which holds both external - internal sheets.
- ③ Factory - fitted foam tape in the female side for a greater jointing sealability.
- ④ Aluminium foil strip, which means less gas escapes from the polyurethane cells thus ensuring good conductivity for longer.
- ⑤ Polyurethane foam core CFC Free & HCFC Free. Not harmful to the environment and no damage to the ozone layer.

PRODUCT TECHNICAL CHARACTERISTICS

PANEL TYPE	SHEET THICKNESS (mm)		CORE THICKNESS (mm)	WEIGHT (kg/m ²)	HEAT TRANSMISSION COEFFICIENT K (W/m ² K)	HEAT TRANSMISSION RESISTANCE 1/Λ (m ² K/W)	MAX LENGTH (m)
	OUTER	INNER					
WLC 40	0.5 0.6	0.5	40	10.61 11.57	0.58	1.56	15.0
WLC 50	0.5 0.6	0.5	50	11.01 11.97	0.47	1.96	
WLC 60	0.5 0.6	0.5	60	11.41 12.37	0.39	2.36	
WLC 80	0.5 0.6	0.5	80	12.21 13.17	0.26	3.76	
WLC 100	0.5 0.6	0.5	100	13.93 14.89	0.21	4.71	
WLC 120	0.5 0.6	0.5	120	14.69 15.65	0.18	5.66	

Thermal conductivity as per DIN 52612 (λ=0,025 W/m.K)

PANEL TOLERANCES

- **CUTTING LENGTH:** ± 4 ~ 8 mm (In relation to panel's length)
- **COVER WIDTH:** ± 2 mm
- **THICKNESS:** ± 2 mm
- **END SQUARE:** ± 3 mm